

MIDDLEBOROUGH HIGH SCHOOL

School Building Committee – November 9, 2016



MIDDLEBOROUGH HIGH SCHOOL

Agenda

- New Construction Site Options
- Addition / Renovation Options
- Existing High School Space Deficiencies

MIDDLEBOROUGH HIGH SCHOOL

Building Location Options: High School Site

MIDDLEBOROUGH HIGH SCHOOL Building Location Options



MIDDLEBOROUGH HIGH SCHOOL

High School Site Option A

MIDDLEBOROUGH HIGH SCHOOL - CONCEPT A
MIDDLEBOROUGH, MA



SCALE 1"=200'

MIDDLEBOROUGH HIGH SCHOOL

High School Site Option A



MIDDLEBOROUGH HIGH SCHOOL

High School Site Option B

MIDDLEBOROUGH HIGH SCHOOL - CONCEPT B
MIDDLEBOROUGH, MA



MIDDLEBOROUGH HIGH SCHOOL

High School Site Option B



MIDDLEBOROUGH HIGH SCHOOL

High School Site Option C

MIDDLEBOROUGH HIGH SCHOOL - CONCEPT C
MIDDLEBOROUGH, MA



MIDDLEBOROUGH HIGH SCHOOL

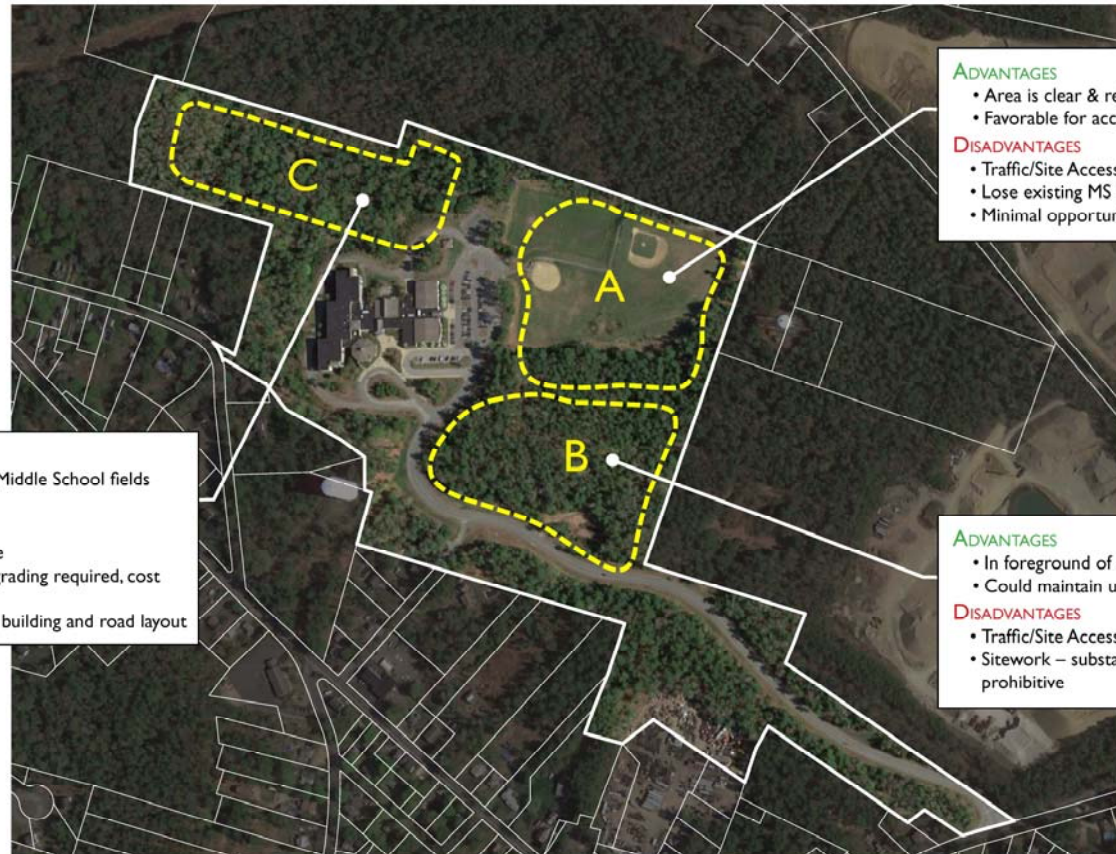
High School Site Option C



MIDDLEBOROUGH HIGH SCHOOL

Building Location Options: Middle School Site

JOHN T. NICHOLS MIDDLE SCHOOL Building Location Options



ADVANTAGES

- Could maintain use of Middle School fields

DISADVANTAGES

- Traffic/Site Access
- Remote location on site
- Sitework – substantial grading required, cost prohibitive
- Spatial constraints limit building and road layout

ADVANTAGES

- Area is clear & relatively flat
- Favorable for access, shared parking, and utilities

DISADVANTAGES

- Traffic/Site Access
- Lose existing MS fields
- Minimal opportunity to add additional fields

ADVANTAGES

- In foreground of site (before the Middle School)
- Could maintain use of Middle School fields

DISADVANTAGES

- Traffic/Site Access
- Sitework – substantial grading required, cost prohibitive

MIDDLEBOROUGH HIGH SCHOOL

Building Location Options: Middle School Site Option A

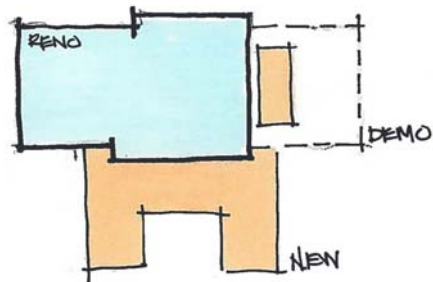
MIDDLEBOROUGH HIGH SCHOOL - MIDDLE SCHOOL CONCEPT
MIDDLEBOROUGH, MA



MIDDLEBOROUGH HIGH SCHOOL

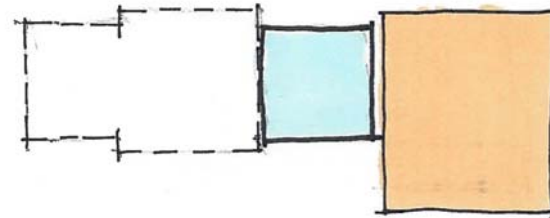
Addition/Renovation Options

MAJOR ADDITION + RENOVATIONS
CLASSROOM ADDITION



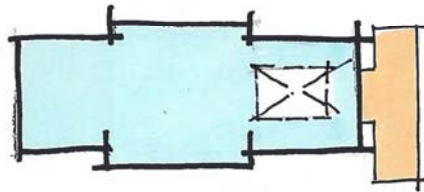
A

MAJOR ADDITION + RENOVATIONS
CLASSROOM RENO - NEW GYM + AUD.



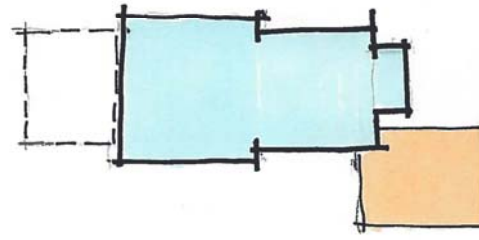
B

MINOR ADDITION
M: COURTYARD + NEW CLASSROOM.



C

MEDIUM ADDITION
NEW EE. COMPLEX.



D

MIDDLEBOROUGH HIGH SCHOOL

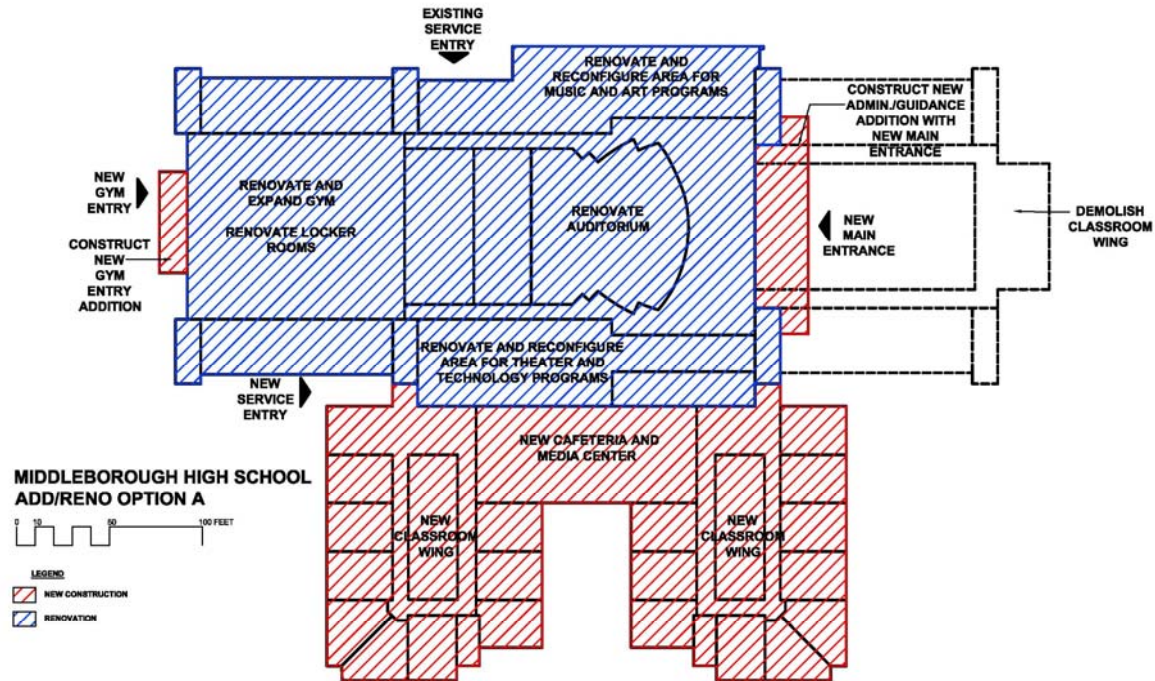
Addition/Renovation Option A

MIDDLEBOROUGH HIGH SCHOOL - ADD/RENO CONCEPT A
MIDDLEBOROUGH, MA



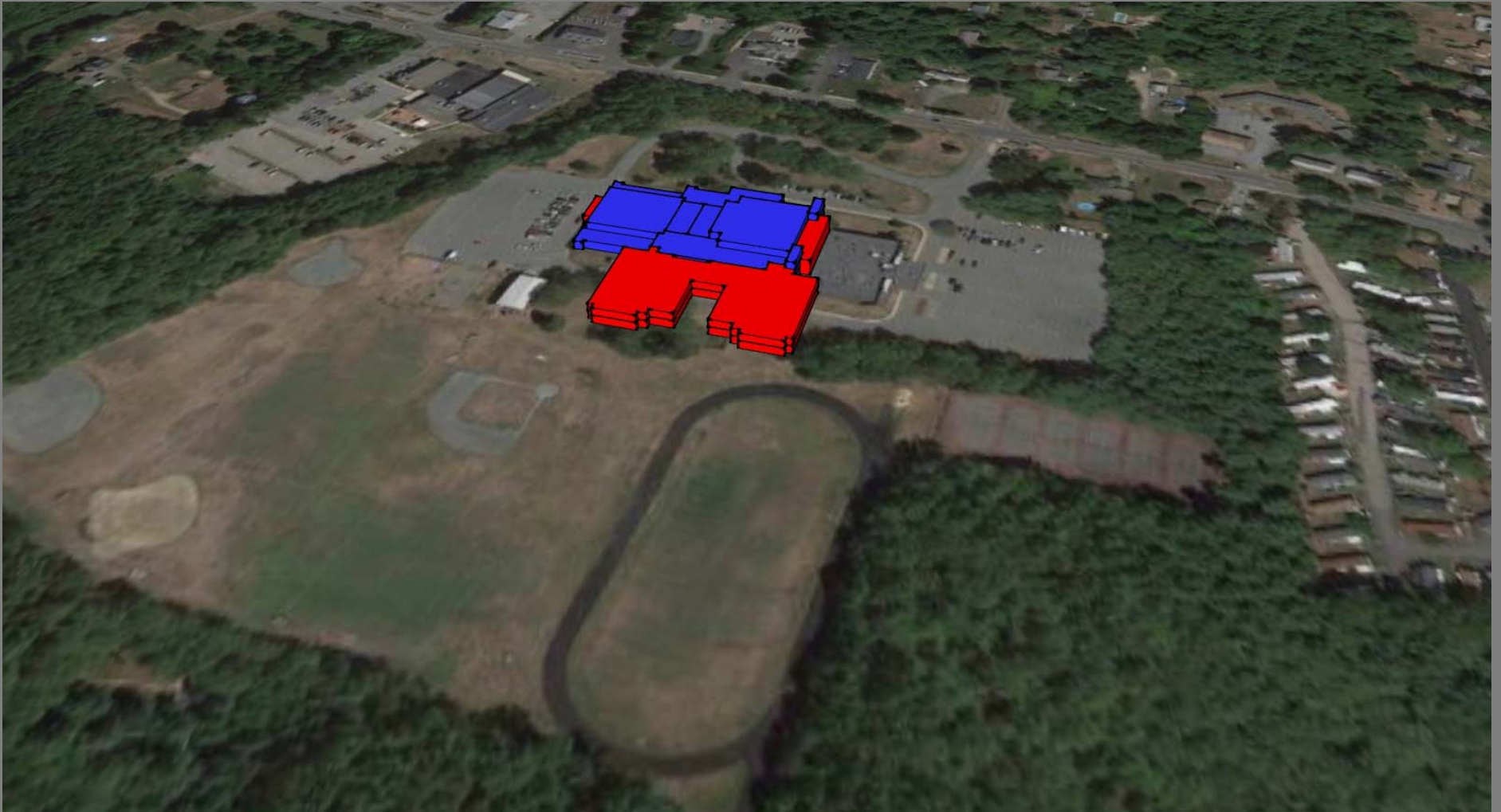
MIDDLEBOROUGH HIGH SCHOOL

Addition/Renovation Option A



MIDDLEBOROUGH HIGH SCHOOL

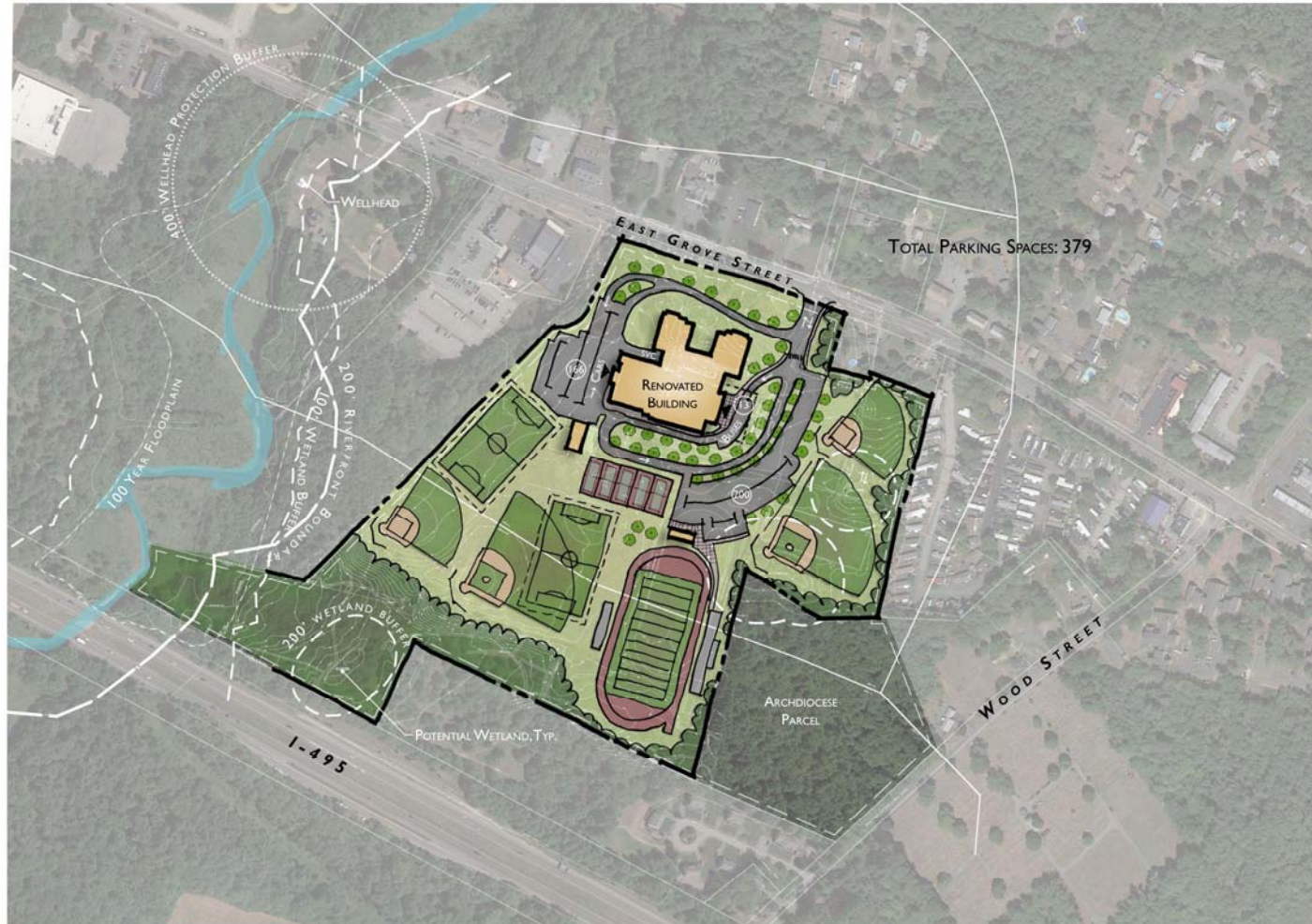
Addition/Renovation Option A



MIDDLEBOROUGH HIGH SCHOOL

Addition/Renovation Option A1

MIDDLEBOROUGH HIGH SCHOOL - ADD/RENO CONCEPT A'
MIDDLEBOROUGH, MA



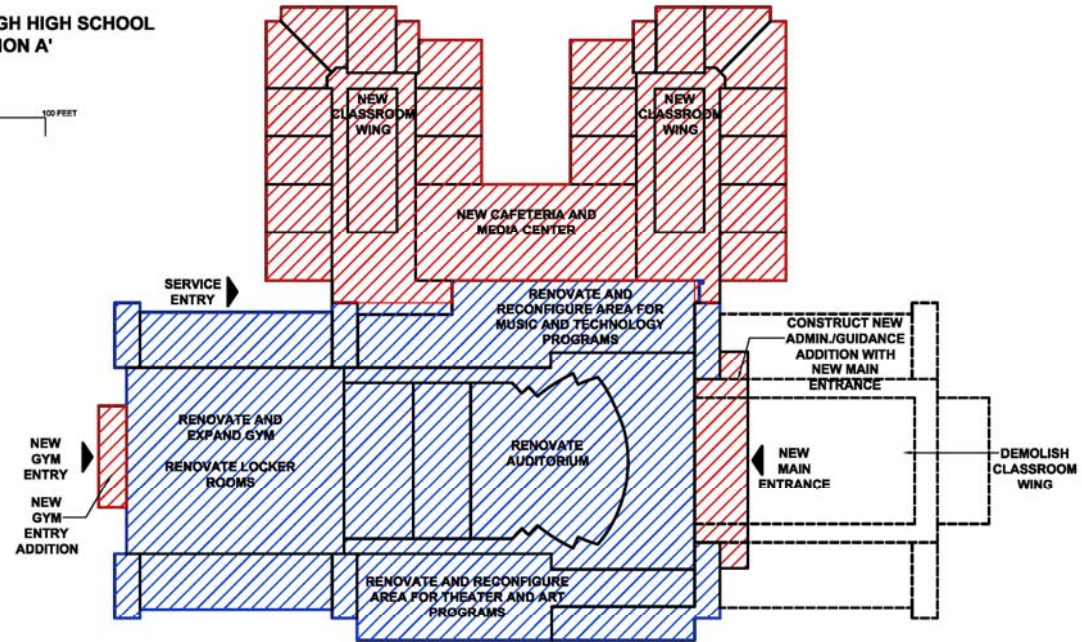
MIDDLEBOROUGH HIGH SCHOOL

Addition/Renovation Option A1

MIDDLEBOROUGH HIGH SCHOOL
ADD/RENO OPTION A'

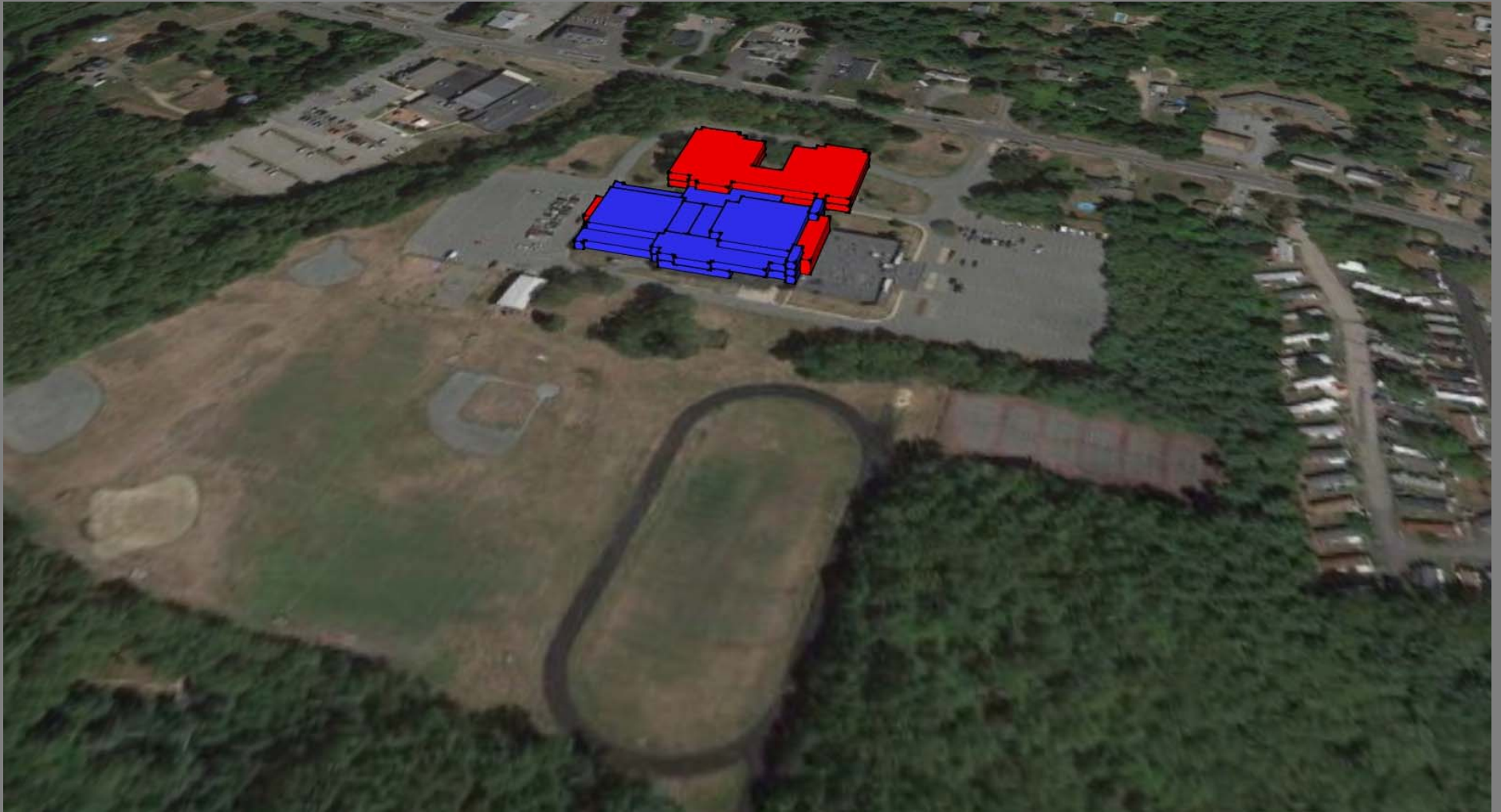


- LEGEND
- NEW CONSTRUCTION
 - RENOVATION



MIDDLEBOROUGH HIGH SCHOOL

Addition/Renovation Option A1



MIDDLEBOROUGH HIGH SCHOOL

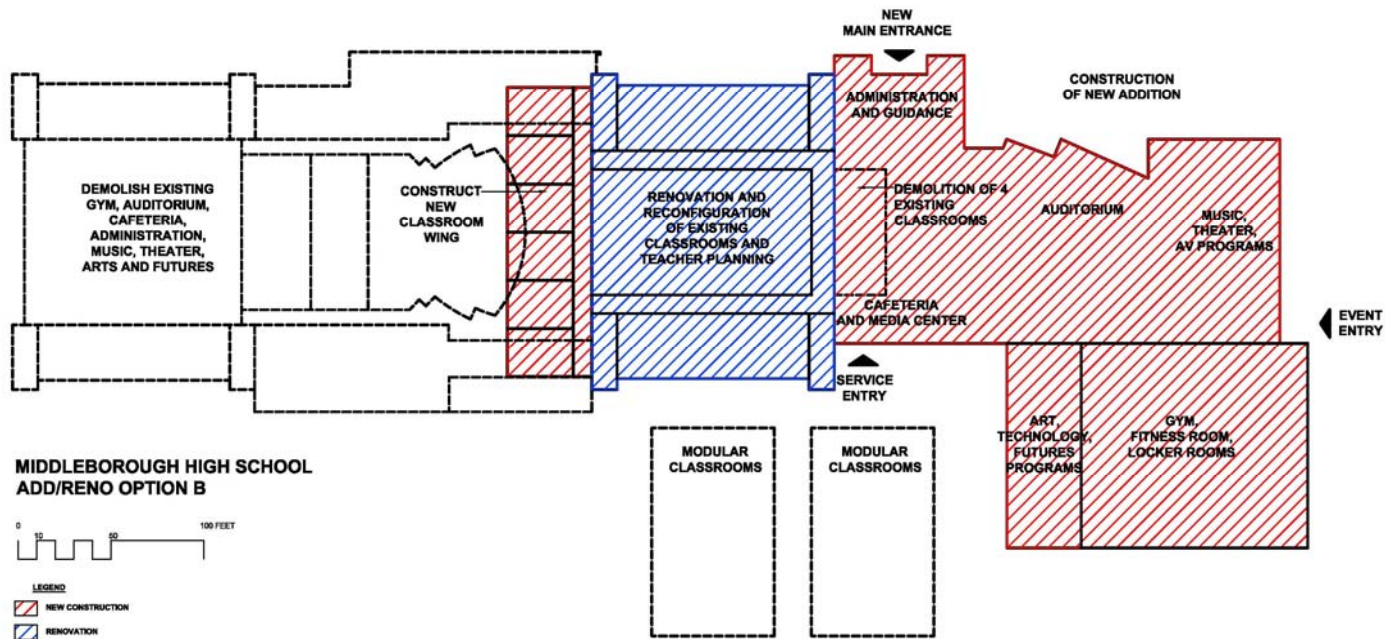
Addition/Renovation Option B

MIDDLEBOROUGH HIGH SCHOOL - ADD/RENO CONCEPT B
MIDDLEBOROUGH, MA



MIDDLEBOROUGH HIGH SCHOOL

Addition/Renovation Option B



MIDDLEBOROUGH HIGH SCHOOL

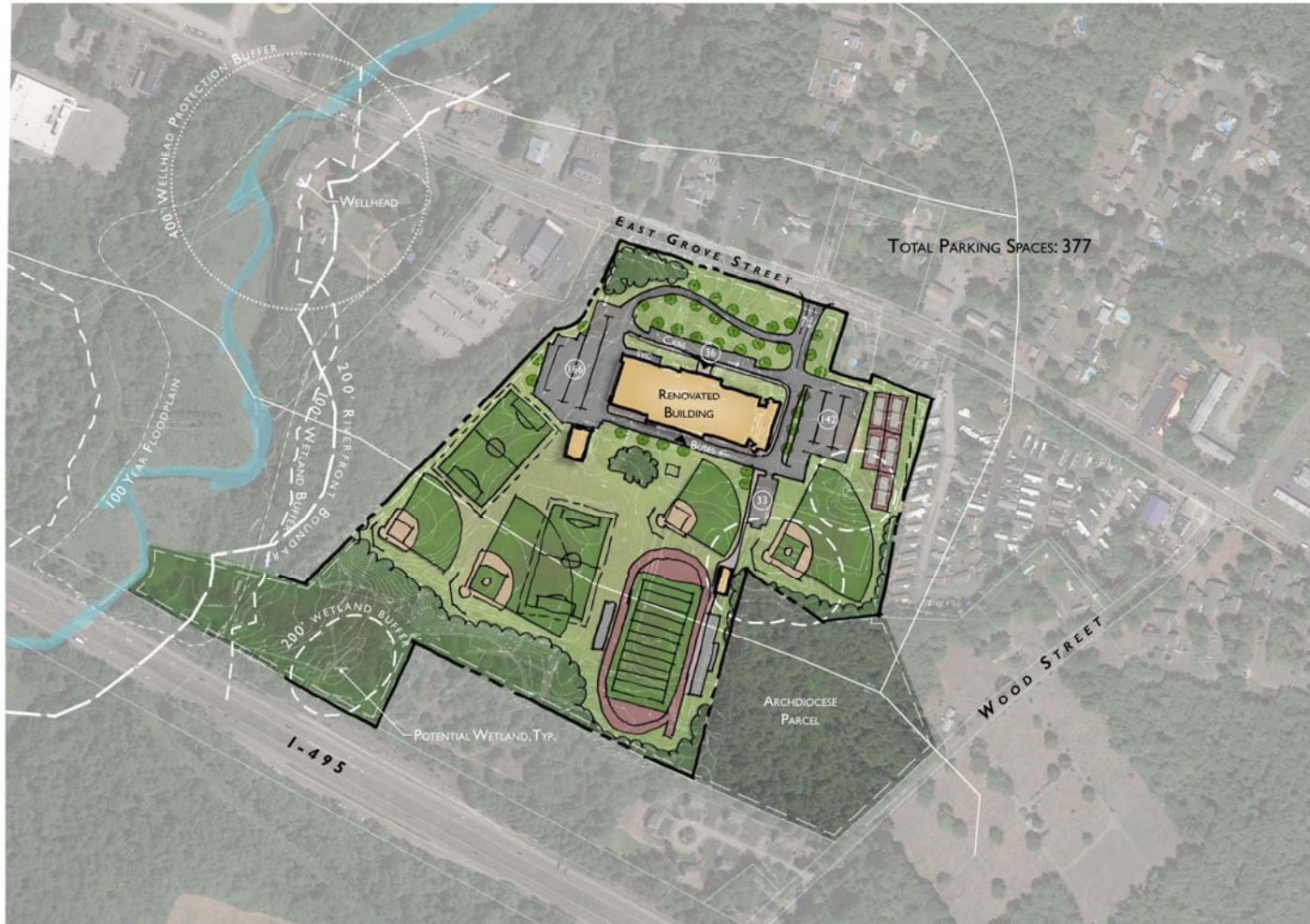
Addition/Renovation Option B



MIDDLEBOROUGH HIGH SCHOOL

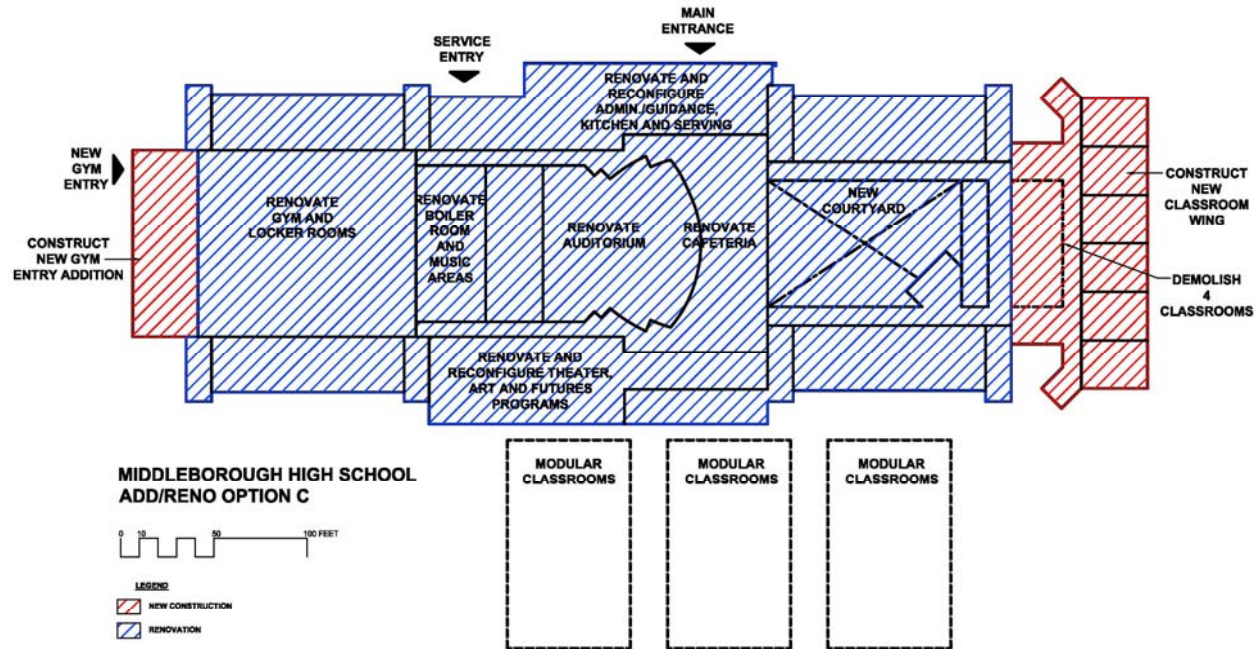
Addition/Renovation Option C

MIDDLEBOROUGH HIGH SCHOOL - ADD/RENO CONCEPT C
MIDDLEBOROUGH, MA



MIDDLEBOROUGH HIGH SCHOOL

Addition/Renovation Option C



MIDDLEBOROUGH HIGH SCHOOL

Addition/Renovation Option C



MIDDLEBOROUGH HIGH SCHOOL

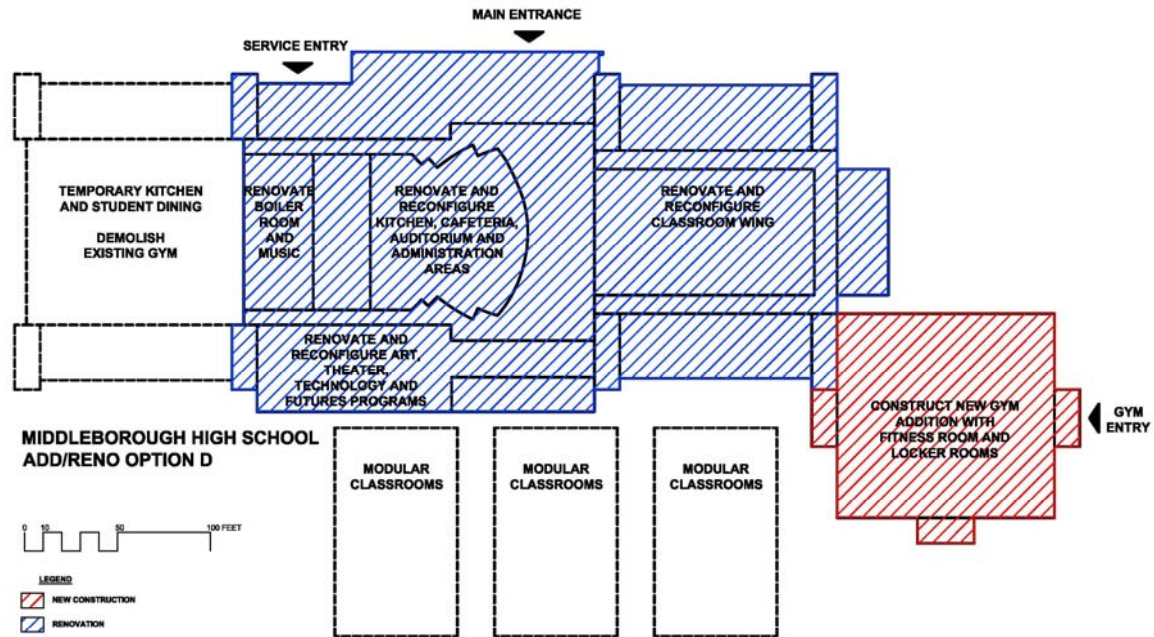
Addition/Renovation Option D

MIDDLEBOROUGH HIGH SCHOOL - ADD/RENO CONCEPT D
MIDDLEBOROUGH, MA



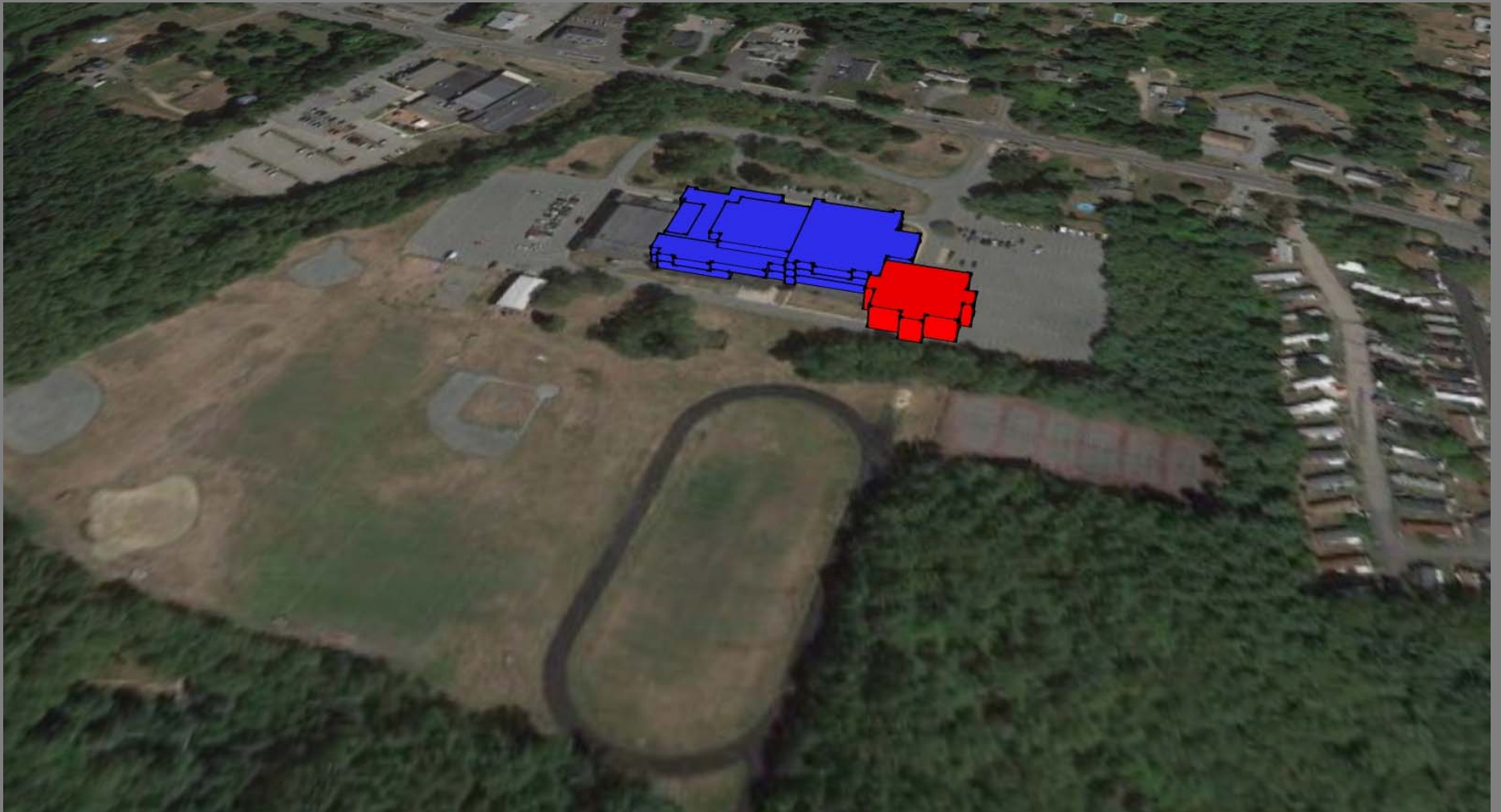
MIDDLEBOROUGH HIGH SCHOOL

Addition/Renovation Option D



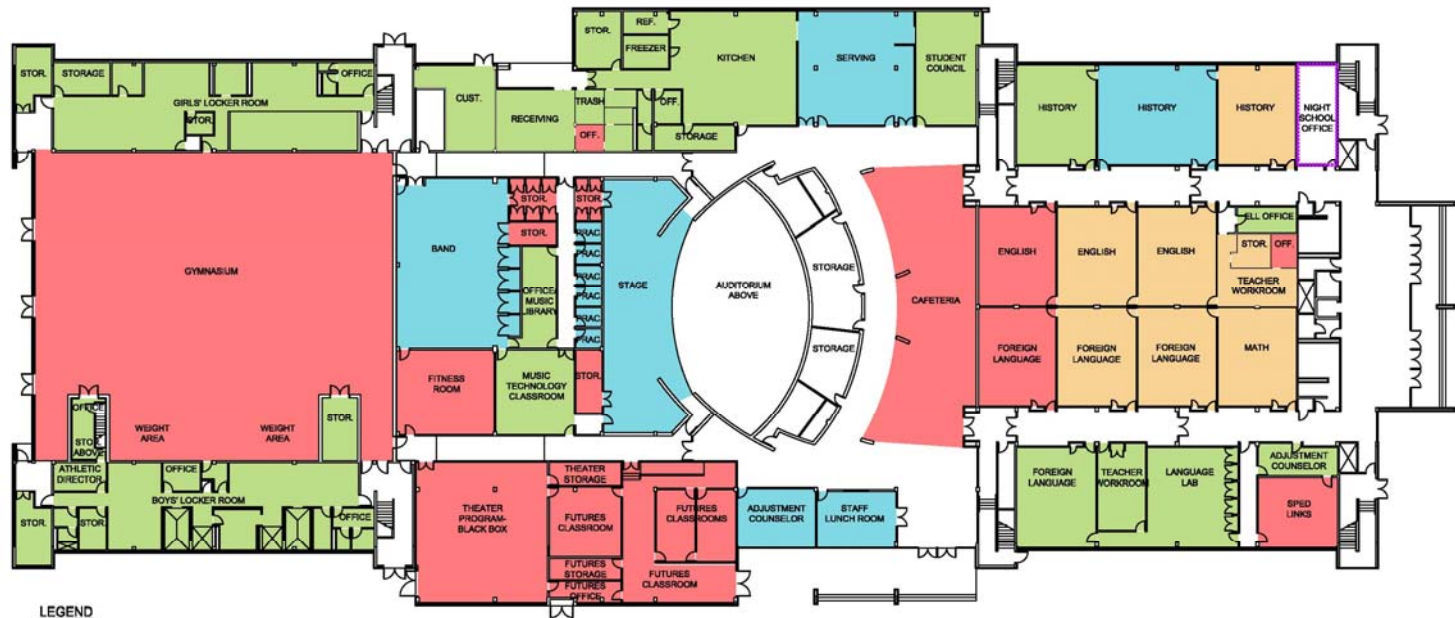
MIDDLEBOROUGH HIGH SCHOOL

Addition/Renovation Option D

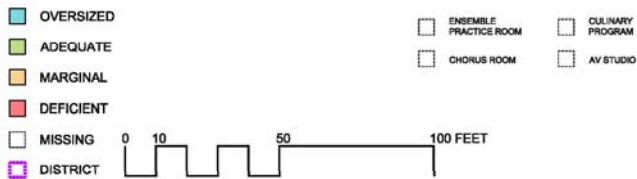


MIDDLEBOROUGH HIGH SCHOOL

Existing High School Deficiency Diagram: Lower Level Plan



LEGEND



LOWER LEVEL PLAN - EXISTING
progress 11.9.16

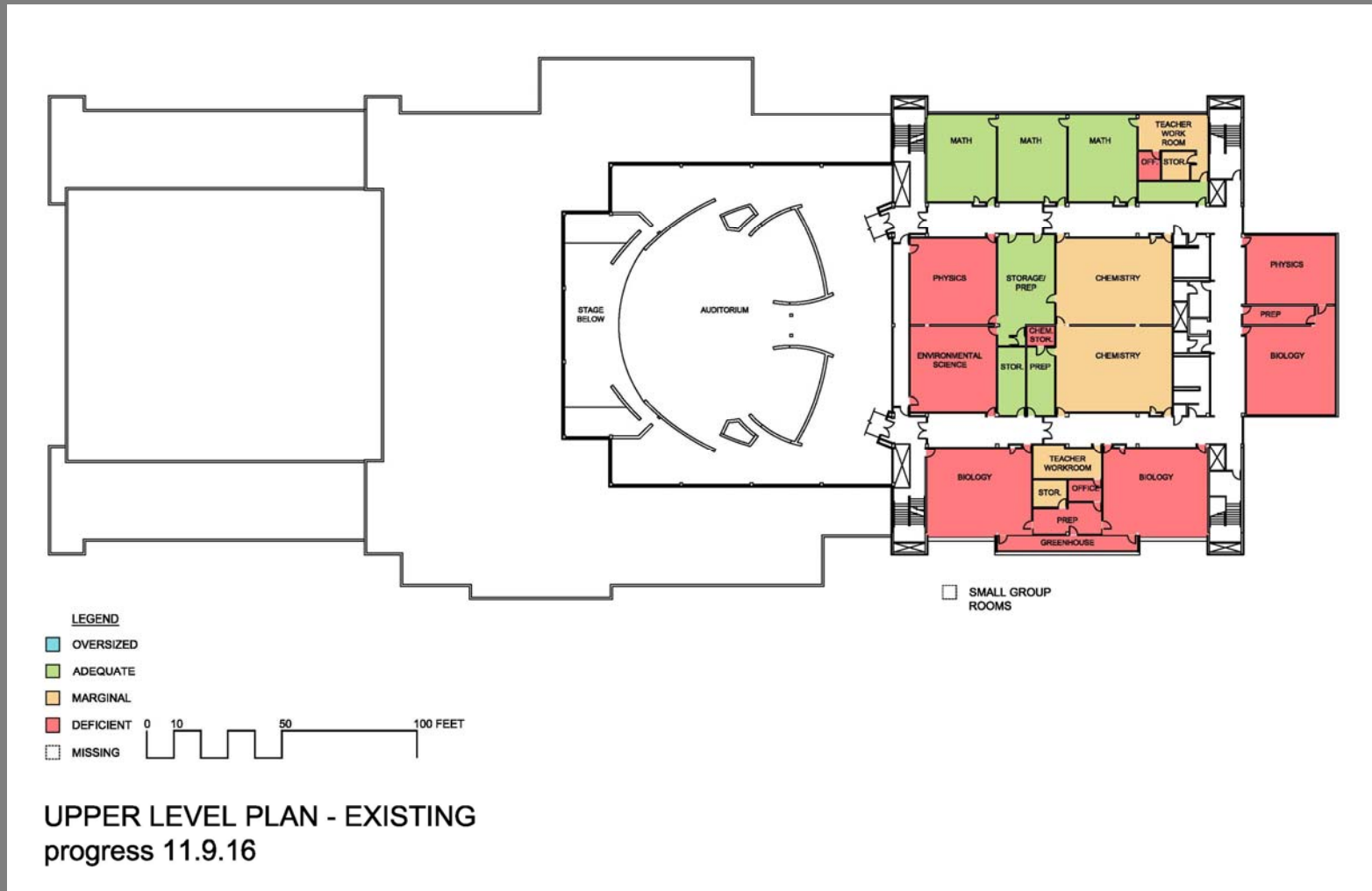
MIDDLEBOROUGH HIGH SCHOOL

Existing High School Deficiency Diagram: Middle Level Plan



MIDDLEBOROUGH HIGH SCHOOL

Existing High School Deficiency Diagram: Upper Level Plan



MIDDLEBOROUGH HIGH SCHOOL

School Building Committee – November 9, 2016

